

DISTRIBUTED ENERGY RESOURCE MANAGEMENT SYSTEM (DERMS)



ORCHESTRATING ENERGY

FROM GRID TO CUSTOMER ASSETS AT THE EDGE

**LEADER IN FLEXIBLE
INTERCONNECTION**

**DEPLOY MEPPI DERMS
IN 6 MONTHS**

**FAST-ACTING,
GRID-AWARE CONTROL**



PATENTED REAL-TIME CONTROL APPLICATION



FULL INTEGRATION ENVIRONMENT



DIVERSE SUITE OF BTM DEVICES

Mitsubishi Electric Power Products, Inc. (MEPPI) is the global leader in operational DERMS implementations. MEPPI DERMS helps utilities and developers maximize the value of existing distributed energy resources (DER), and onboard new resources and schemes, through monitoring and management of the current network configurations in real-time.

MEPPI DERMS offers unique solutions from Flexible Interconnections (Grid DERMS for Front-of-the-Meter DER assets) to management of customer programs (Edge DERMS for Behind-the-Meter DER assets). Its ability to fill gaps in our customers' data and network models allows utilities to procure a robust operational system with what you have today, enabling rapid deployment and room to grow the system to meet future use case needs.

THE **ONLY** PLATFORM CONTROLLING GRID AND EDGE ASSETS

SYSTEM BENEFITS	USE CASES
Removes the Control Room Burden	Flexible Interconnection
Reduces Operational and Delivery Cost	DER Constraint Management
Reduces Integration Costs and Timeline	Circuit Load Management
Reduces Operational Risk	Demand Response
Maximizes Value of Existing Investments	Vehicle Grid Integration
Model and Grid Aware	Volt Var Optimization
Grid DERMS and Edge DERMS Integration	Virtual Power Plant
	Microgrid Management
	Edge DERMS Integration
	DER Geographic Visualization
	DER Forecasting and Optimization
	DER Dispatch and Control



Front-of-the-Meter (FTM)



DERMS



Behind-the-Meter (BTM)



NON-WIRES ALTERNATIVES

Using MEPPi DERMS, AVANGRID introduced non-wires alternative methods to incorporate the fast-acting, autonomous control methods used by MEPPi DERMS to minimize curtailment actions and accompanying revenue reduction for customers. MEPPi DERMS was able to double grid-hosting capacity and reduce customer need for grid upgrade capital expenditure. Customer solar power projects are already operational, leveraging the increased grid-hosting capacity.



FLEXIBLE INTERCONNECTION

An influx of DERs caused National Grid to reach the limitations of their existing infrastructure. As a result, National Grid sought a smart, innovative solution to address these concerns by providing network congestion management and increased grid utilization for current and future additions to the grid. National Grid selected MEPPi DERMS as their DERMS solution. MEPPi DERMS sends real-time operating envelopes to ensure the BESS dispatch is within the agreed limits set by National Grid. If the operators do not follow the limits set by National Grid, MEPPi DERMS takes fail-safe actions to ensure National Grid operates a safe and reliable grid.



CO-OPTIMIZATION OF BATTERY STORAGE (CONED/NYISO)

First REV (Reforming the Energy Vision) Demo battery project in NY to include stacked values (Utility and Developer) and integration with the NYISO. The system combines Economically Optimized Battery Scheduling (day-ahead ISO market), Load Relief Scheduling and real-time control.

- Priority Dispatch and Revenue Sharing mechanism between Con Edison and Endurant:
- Dispatch agreement provides utility with priority access to battery services during peak load periods New York ISO wholesale market participation
- Four 1 MW / 1 MWh battery storage assets connected and providing services. MEPPi DERMS platform manages revenue stacking and value optimization for battery owner/operator

SPEAK TO OUR TEAM ABOUT A CUSTOM DEMONSTRATION.



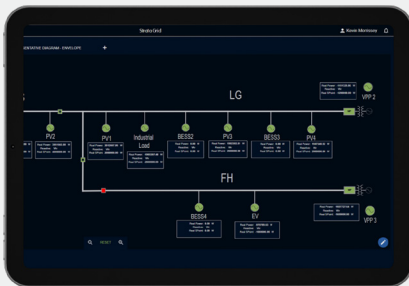
Flexible Interconnections



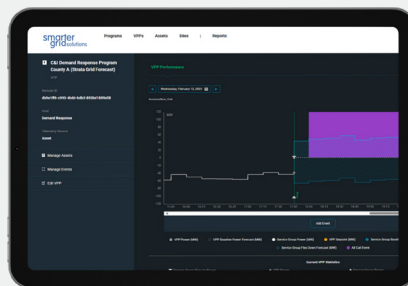
Operating Envelopes



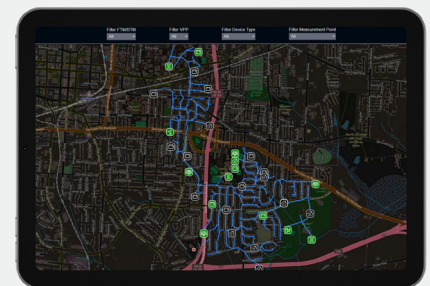
Forecasting &
Optimization



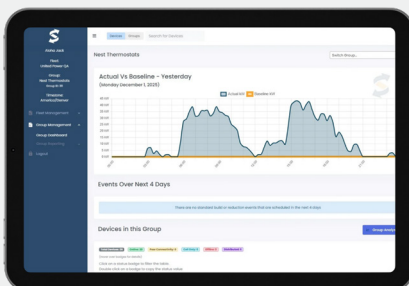
Network Model Management



Edge DERMS & Demand
Response Integration



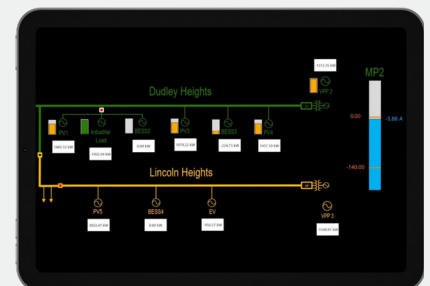
DER Visualization



DER Registration &
Customer Portal



Market Integration



System Integration

**MITSUBISHI ELECTRIC
POWER PRODUCTS, INC.**

Phone: (+1) (866) 390-6487

Fax: (+1) (724) 778-5209

in @Mitsubishi Electric Power Products

LEARN MORE

